

Twice SQ'd

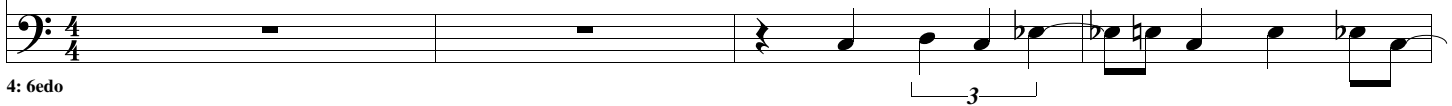
5,477 notes

Chris Vaisvil
Copyright 2015 by Chris Vaisvil

1



2: 18edo

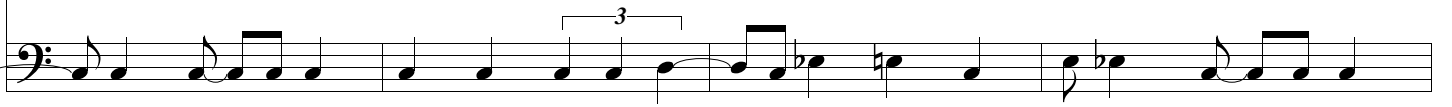


4: 6edo

5



2:
18edc



4:
6edo

9



2:
18edc

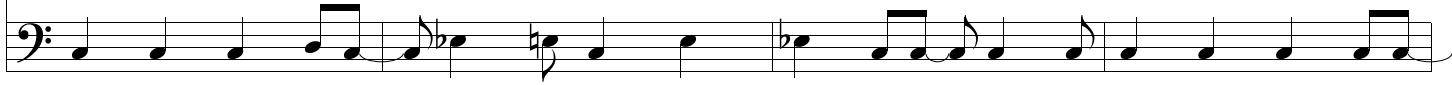


4:
6edo

13



2:
18edc



4:
6edo

37

2:
18edc

4:
6edo

41

2:
18edc

4:
6edo

45

2:
18edc

4:
6edo

49

2:
18edc

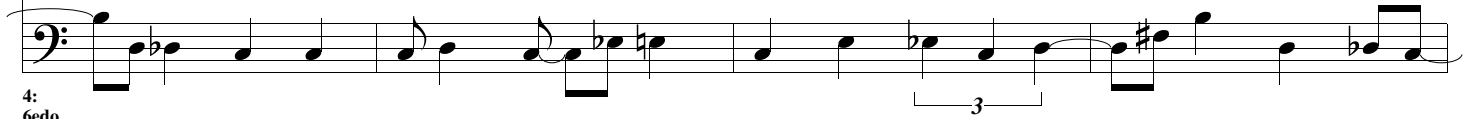
4:
6edo

53

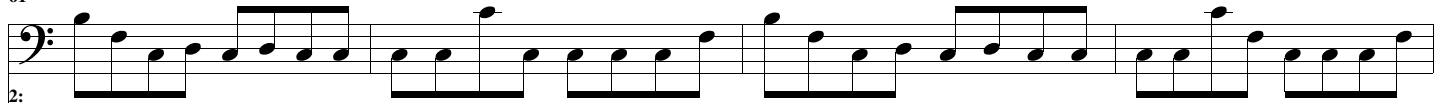
2:
18edc

4:
6edo

57

2:
18edc4:
6edo

61

2:
18edc4:
6edo

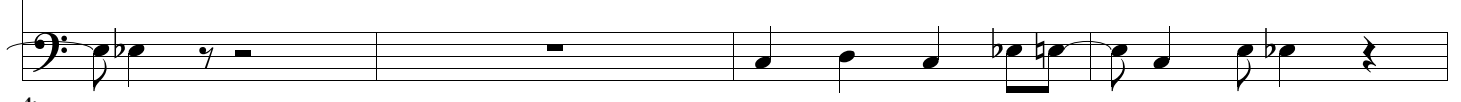
65

2:
18edc4:
6edo

69

2:
18edc4:
6edo

73

2:
18edc4:
6edo

117

2:
18edc

4:
6edo

121

2:
18edc

4:
6edo

125

2:
18edc

4:
6edo

129

2:
18edc

4:
6edo

133

2:
18edc

4:
6edo

137

2:
18edc

4:
6edo

141

2:
18edc

4:
6edo

145

2:
18edc

4:
6edo

149

2:
18edc

4:
6edo

153

2:
18edc

4:
6edo

197

2:
18edc

4:
6edo

201

2:
18edc

4:
6edo

205

2:
18edc

4:
6edo

209

2:
18edc

4:
6edo

213

2:
18edc

4:
6edo

217

2:
18edc

4:
6edo

221

2:
18edc

4:
6edo

225

2:
18edc

4:
6edo

229

2:
18edc

4:
6edo

233

2:
18edc

4:
6edo

237

2:
18edc

Detailed description: This system contains the first two staves of music starting at measure 237. The top staff is in bass clef with a key signature of one flat (B-flat). It features a complex rhythmic pattern with eighth and sixteenth notes, including some triplets and slurs. The bottom staff is also in bass clef and contains a simpler rhythmic accompaniment with eighth notes and rests.

4:
6edo

Detailed description: This block contains the second staff of music for system 237, which is a bass clef staff with a 6edo tuning. It continues the rhythmic accompaniment from the top staff, featuring eighth notes and rests.

241

2:
18edc

Detailed description: This system contains the first two staves of music starting at measure 241. The top staff is in bass clef with a key signature of one flat (B-flat). It features a complex rhythmic pattern with eighth and sixteenth notes, including some triplets and slurs. The bottom staff is also in bass clef and contains a simpler rhythmic accompaniment with eighth notes and rests.

4:
6edo

Detailed description: This block contains the second staff of music for system 241, which is a bass clef staff with a 6edo tuning. It continues the rhythmic accompaniment from the top staff, featuring eighth notes and rests.

245

2:
18edc

Detailed description: This system contains the first two staves of music starting at measure 245. The top staff is in bass clef with a key signature of one flat (B-flat). It features a complex rhythmic pattern with eighth and sixteenth notes, including some triplets and slurs. The bottom staff is also in bass clef and contains a simpler rhythmic accompaniment with eighth notes and rests.

4:
6edo

Detailed description: This block contains the second staff of music for system 245, which is a bass clef staff with a 6edo tuning. It continues the rhythmic accompaniment from the top staff, featuring eighth notes and rests.

249

2:
18edc

Detailed description: This system contains the first two staves of music starting at measure 249. The top staff is in bass clef with a key signature of one flat (B-flat). It features a complex rhythmic pattern with eighth and sixteenth notes, including some triplets and slurs. The bottom staff is also in bass clef and contains a simpler rhythmic accompaniment with eighth notes and rests.

4:
6edo

Detailed description: This block contains the second staff of music for system 249, which is a bass clef staff with a 6edo tuning. It continues the rhythmic accompaniment from the top staff, featuring eighth notes and rests.

253

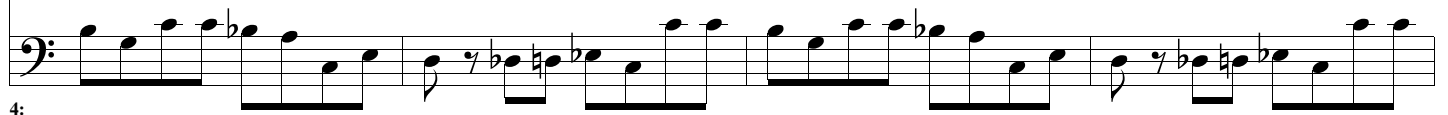
2:
18edc

Detailed description: This system contains the first two staves of music starting at measure 253. The top staff is in bass clef with a key signature of one flat (B-flat). It features a complex rhythmic pattern with eighth and sixteenth notes, including some triplets and slurs. The bottom staff is also in bass clef and contains a simpler rhythmic accompaniment with eighth notes and rests.

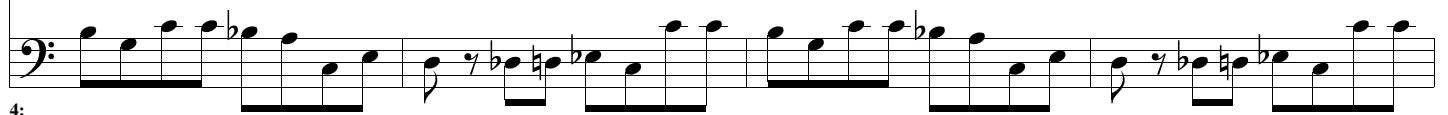
4:
6edo

Detailed description: This block contains the second staff of music for system 253, which is a bass clef staff with a 6edo tuning. It continues the rhythmic accompaniment from the top staff, featuring eighth notes and rests.

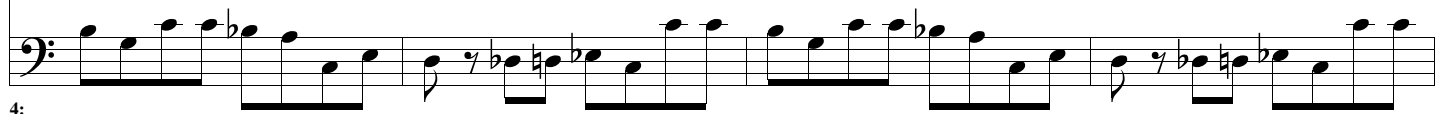
257

2:
18edc4:
6edo

261

2:
18edc4:
6edo

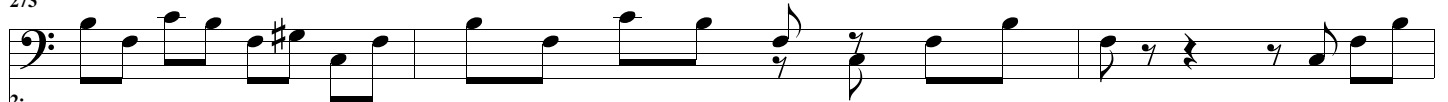
265

2:
18edc4:
6edo

269

2:
18edc4:
6edo

273

2:
18edc4:
6edo

276

2:
18edc

4:
6edo

280

2:
18edc

4:
6edo

284

2:
18edc

4:
6edo

288

2:
18edc

4:
6edo

292

2:
18edc

4:
6edo

296

2:
18edc

4:
6edo

This system contains measures 296-299. The top staff is a bass clef with a key signature of one flat (B-flat). It features a rhythmic pattern of quarter notes and rests. The bottom staff is a bass clef with a key signature of one flat, playing a continuous eighth-note accompaniment.

300

2:
18edc

4:
6edo

This system contains measures 300-303. The top staff continues the rhythmic pattern from the previous system. The bottom staff continues the eighth-note accompaniment.

304

2:
18edc

4:
6edo

This system contains measures 304-307. The top staff introduces a new rhythmic pattern with eighth notes and quarter notes. The bottom staff continues the eighth-note accompaniment.

308

2:
18edc

4:
6edo

This system contains measures 308-311. The top staff continues the rhythmic pattern from the previous system. The bottom staff continues the eighth-note accompaniment.

312

2:
18edc

4:
6edo

This system contains measures 312-315. The top staff continues the rhythmic pattern from the previous system. The bottom staff continues the eighth-note accompaniment.

316

2:
18edc

4:
6edo

This system contains two staves of music. The top staff is in bass clef with a 2/4 time signature and a key signature of one flat. It features a melodic line with eighth notes and rests. The bottom staff is also in bass clef with a 4/4 time signature and a key signature of one flat, providing a harmonic accompaniment with eighth and sixteenth notes.

320

2:
18edc

4:
6edo

This system contains two staves of music. The top staff is in bass clef with a 2/4 time signature and a key signature of one flat. The bottom staff is in bass clef with a 4/4 time signature and a key signature of one flat, featuring a triplet of eighth notes in the first measure.

323

2:
18edc

4:
6edo

This system contains two staves of music. The top staff is in bass clef with a 2/4 time signature and a key signature of one flat. The bottom staff is in bass clef with a 4/4 time signature and a key signature of one flat, featuring a melodic line with eighth notes and rests.

326

2:
18edc

4:
6edo

This system contains two staves of music. The top staff is in bass clef with a 2/4 time signature and a key signature of one flat. The bottom staff is in bass clef with a 4/4 time signature and a key signature of one flat, featuring a melodic line with eighth notes and rests.

329

2:
18edc

4:
6edo

This system contains two staves of music. The top staff is in bass clef with a 2/4 time signature and a key signature of one flat. The bottom staff is in bass clef with a 4/4 time signature and a key signature of one flat, featuring a melodic line with eighth notes and rests.

333

2:
18edc

This system contains the first staff of music for measure 333. It features a bass clef and a key signature of one flat. The melody consists of eighth and quarter notes with various accidentals (sharps and flats).

4:
6edo

This system contains the second staff of music for measure 333. It features a bass clef and a key signature of one flat. The melody consists of eighth and quarter notes with various accidentals (sharps and flats).

337

2:
18edc

This system contains the first staff of music for measure 337. It features a bass clef and a key signature of one flat. The melody consists of eighth and quarter notes with various accidentals (sharps and flats).

4:
6edo

This system contains the second staff of music for measure 337. It features a bass clef and a key signature of one flat. The melody consists of eighth and quarter notes with various accidentals (sharps and flats).

341

2:
18edc

This system contains the first staff of music for measure 341. It features a bass clef and a key signature of one flat. The melody consists of eighth and quarter notes with various accidentals (sharps and flats).

4:
6edo

This system contains the second staff of music for measure 341. It features a bass clef and a key signature of one flat. The melody consists of eighth and quarter notes with various accidentals (sharps and flats).

345

2:
18edc

This system contains the first staff of music for measure 345. It features a bass clef and a key signature of one flat. The melody consists of eighth and quarter notes with various accidentals (sharps and flats).

4:
6edo

This system contains the second staff of music for measure 345. It features a bass clef and a key signature of one flat. The melody consists of eighth and quarter notes with various accidentals (sharps and flats).

349

2:
18edc

This system contains the first staff of music for measure 349. It features a bass clef and a key signature of one flat. The melody consists of eighth and quarter notes with various accidentals (sharps and flats).

4:
6edo

This system contains the second staff of music for measure 349. It features a bass clef and a key signature of one flat. The melody consists of eighth and quarter notes with various accidentals (sharps and flats).

353

2:
18edc

4:
6edo

357

2:
18edc

4:
6edo

361

2:
18edc

4:
6edo

365

2:
18edc

4:
6edo

370

2:
18edc

4:
6edo

375

First staff of music for measure 375, featuring a bass clef and a melodic line with a long slur.

2:
18edc

Second staff of music for measure 375, featuring a bass clef and a rhythmic accompaniment line.

4:
6edo

379

First staff of music for measure 379, featuring a bass clef and a melodic line with a long slur.

2:
18edc

Second staff of music for measure 379, featuring a bass clef and a rhythmic accompaniment line.

4:
6edo

383

First staff of music for measure 383, featuring a bass clef and a melodic line with a long slur.

2:
18edc

Second staff of music for measure 383, featuring a bass clef and a rhythmic accompaniment line.

4:
6edo

387

First staff of music for measure 387, featuring a bass clef and a melodic line with a long slur.

2:
18edc

Second staff of music for measure 387, featuring a bass clef and a rhythmic accompaniment line.

4:
6edo

391

First staff of music for measure 391, featuring a bass clef and a melodic line with a long slur.

2:
18edc

Second staff of music for measure 391, featuring a bass clef and a rhythmic accompaniment line.

4:
6edo

395

2:
18edc

4:
6edo

This system contains two staves of music. The top staff (labeled '2: 18edc') features a melodic line with a half note, a quarter note, and a half note, all connected by a slur. The bottom staff (labeled '4: 6edo') provides a rhythmic accompaniment with eighth notes and rests.

399

2:
18edc

4:
6edo

This system contains two staves of music. The top staff (labeled '2: 18edc') features a melodic line with a half note, a quarter note, and a half note, all connected by a slur. The bottom staff (labeled '4: 6edo') provides a rhythmic accompaniment with eighth notes and rests.

403

2:
18edc

4:
6edo

This system contains two staves of music. The top staff (labeled '2: 18edc') features a melodic line with a half note, a quarter note, and a half note, all connected by a slur. The bottom staff (labeled '4: 6edo') provides a rhythmic accompaniment with eighth notes and rests.

407

2:
18edc

4:
6edo

This system contains two staves of music. The top staff (labeled '2: 18edc') features a melodic line with a half note, a quarter note, and a half note, all connected by a slur. The bottom staff (labeled '4: 6edo') provides a rhythmic accompaniment with eighth notes and rests.

411

2:
18edc

4:
6edo

This system contains two staves of music. The top staff (labeled '2: 18edc') features a melodic line with a half note, a quarter note, and a half note, all connected by a slur. The bottom staff (labeled '4: 6edo') provides a rhythmic accompaniment with eighth notes and rests.

416

2:
18edc

4:
6edo

420

2:
18edc

4:
6edo

424

2:
18edc

4:
6edo

428

2:
18edc

4:
6edo

433

2:
18edc

4:
6edo

438

Top staff for measure 438, featuring a bass clef and a whole note chord.

2:
18edc

Bottom staff for measure 438, featuring a bass clef and a complex rhythmic pattern.

4:
6edo

443

Top staff for measure 443, featuring a bass clef and a whole note chord.

2:
18edc

Bottom staff for measure 443, featuring a bass clef and a complex rhythmic pattern.

4:
6edo

447

Top staff for measure 447, featuring a bass clef and a whole note chord.

2:
18edc

Bottom staff for measure 447, featuring a bass clef and a complex rhythmic pattern.

4:
6edo

451

Top staff for measure 451, featuring a bass clef and a whole note chord.

2:
18edc

Bottom staff for measure 451, featuring a bass clef and a complex rhythmic pattern.

4:
6edo

456

Top staff for measure 456, featuring a bass clef and a whole note chord.

2:
18edc

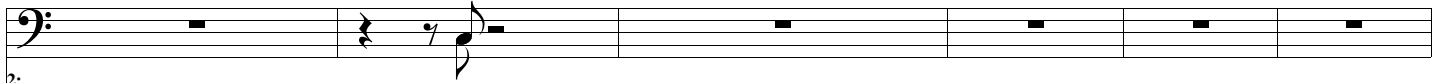
Bottom staff for measure 456, featuring a bass clef and a complex rhythmic pattern.

4:
6edo

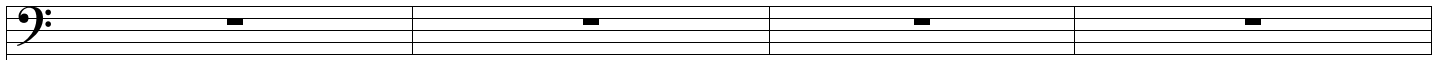
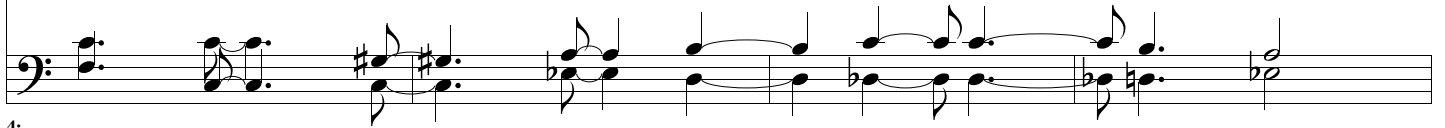
461

2:
18edc4:
6edo

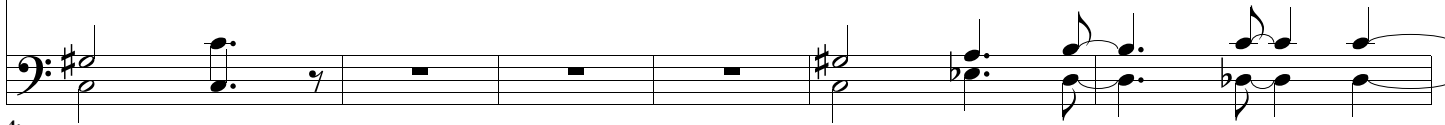
466

2:
18edc4:
6edo

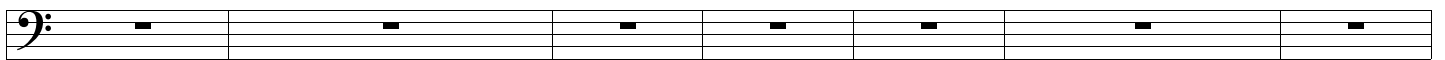
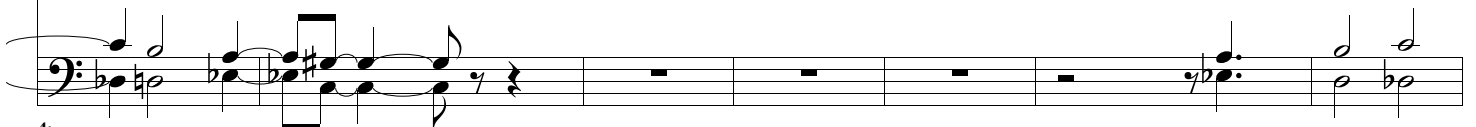
472

2:
18edc4:
6edo

476

2:
18edc4:
6edo

482

2:
18edc4:
6edo

489

2:
18edc

4:
6edo

This exercise consists of two staves. The top staff is a bass clef staff with seven measures of whole rests. The bottom staff is a bass clef staff with a key signature of one flat (Bb). It contains musical notation for the first two measures, including eighth and quarter notes with stems, and rests for the remaining five measures.

496

2:
18edc

4:
6edo

This exercise consists of two staves. The top staff is a bass clef staff with seven measures of whole rests. The bottom staff is a bass clef staff with a key signature of one flat (Bb). It contains musical notation for the first two measures, including eighth and quarter notes with stems, and rests for the remaining five measures.

503

2:
18edc

4:
6edo

This exercise consists of two staves. The top staff is a bass clef staff with seven measures of whole rests. The bottom staff is a bass clef staff with a key signature of one flat (Bb). It contains musical notation for the first two measures, including eighth and quarter notes with stems, and rests for the remaining five measures.

510

2:
18edc

4:
6edo

This exercise consists of two staves. The top staff is a bass clef staff with seven measures of whole rests. The bottom staff is a bass clef staff with a key signature of one flat (Bb). It contains musical notation for the first two measures, including eighth and quarter notes with stems, and rests for the remaining five measures.

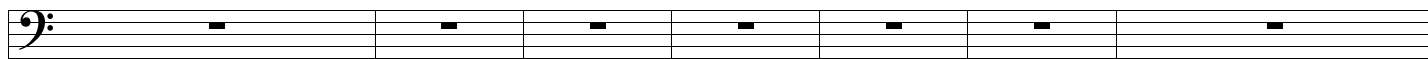
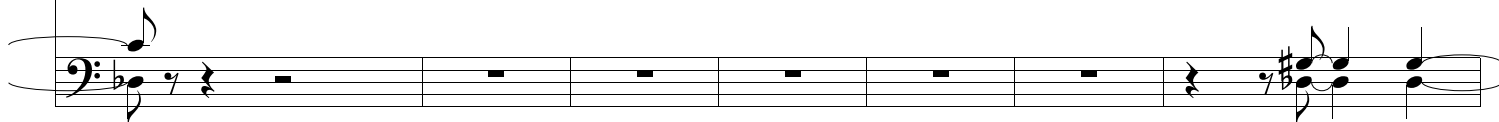
518

2:
18edc

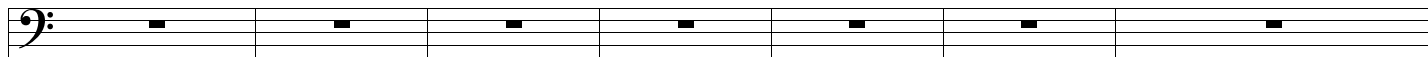
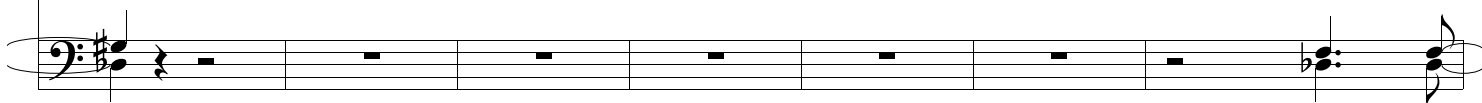
4:
6edo

This exercise consists of two staves. The top staff is a bass clef staff with seven measures of whole rests. The bottom staff is a bass clef staff with a key signature of one flat (Bb). It contains musical notation for the last two measures, including eighth and quarter notes with stems, and rests for the first five measures.

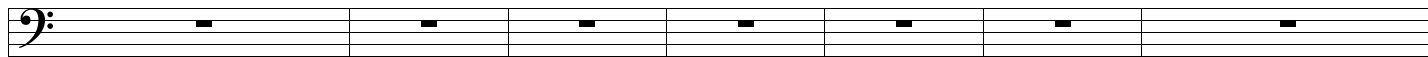
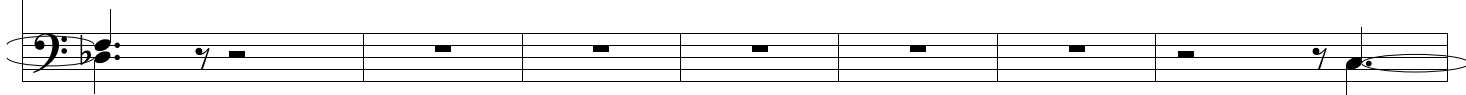
525

2:
18edc4:
6edo

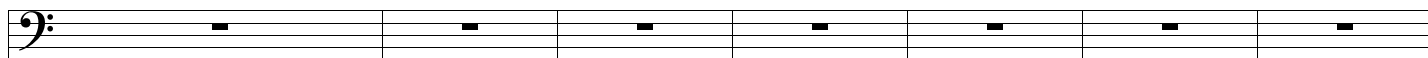
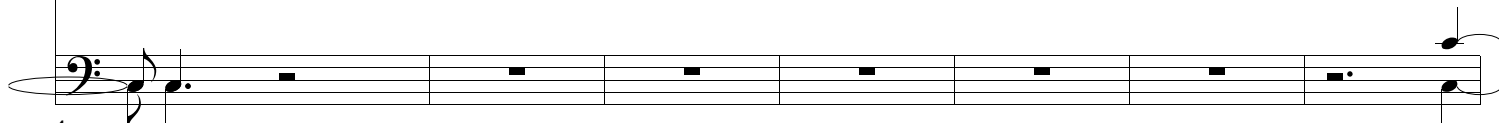
532

2:
18edc4:
6edo

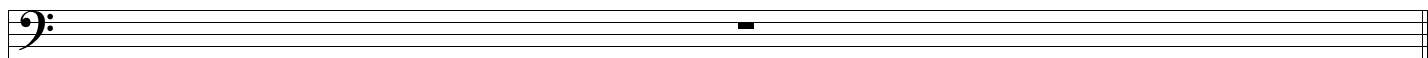
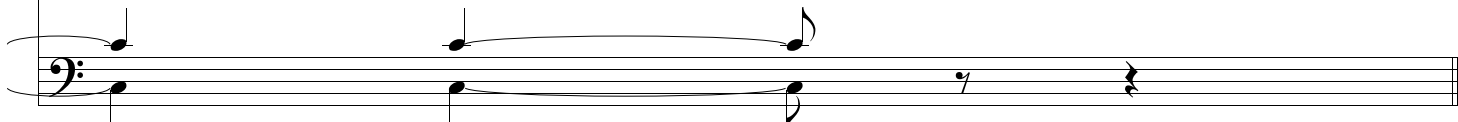
539

2:
18edc4:
6edo

546

2:
18edc4:
6edo

553

2:
18edc4:
6edo